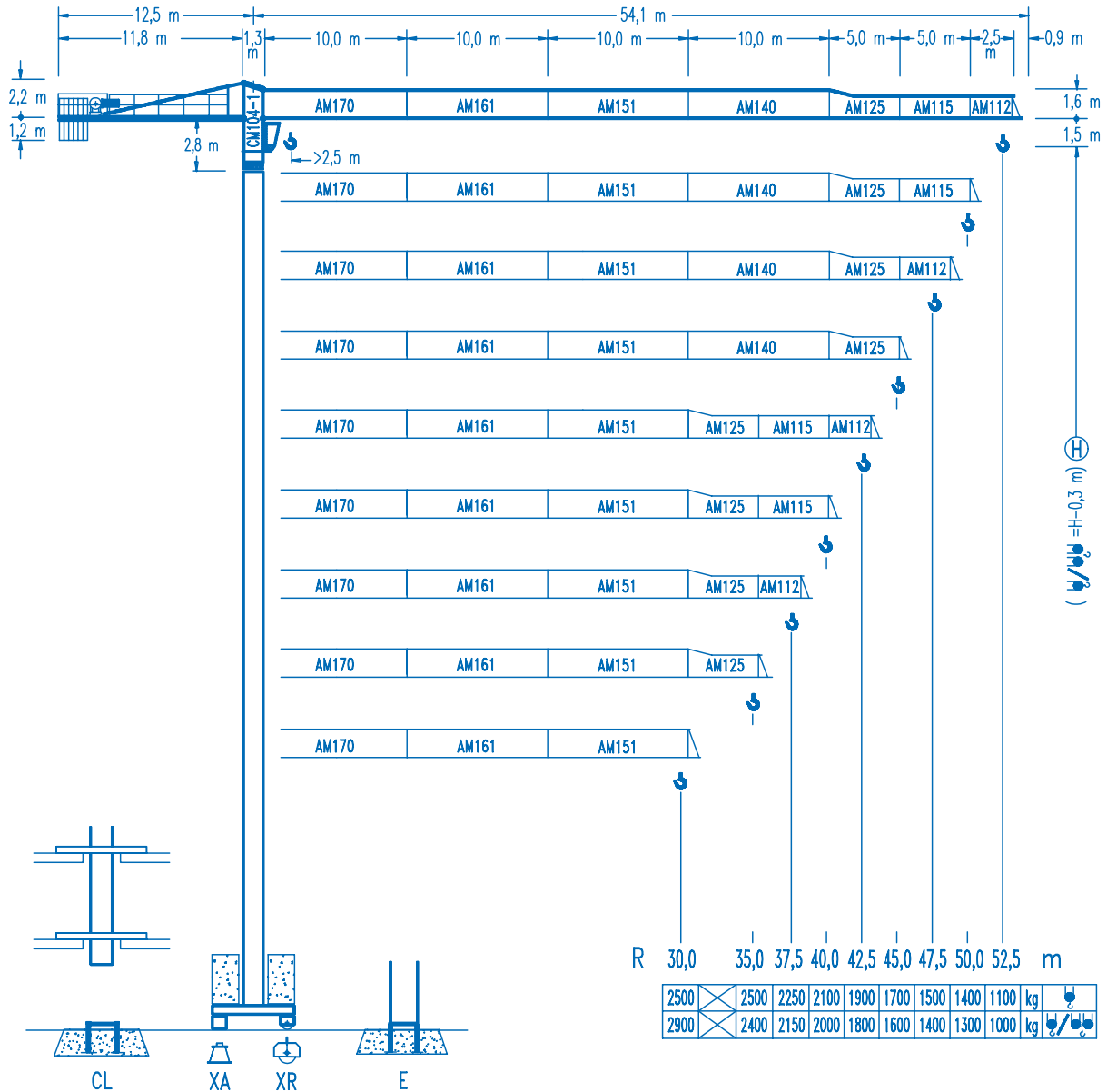




COMANSA

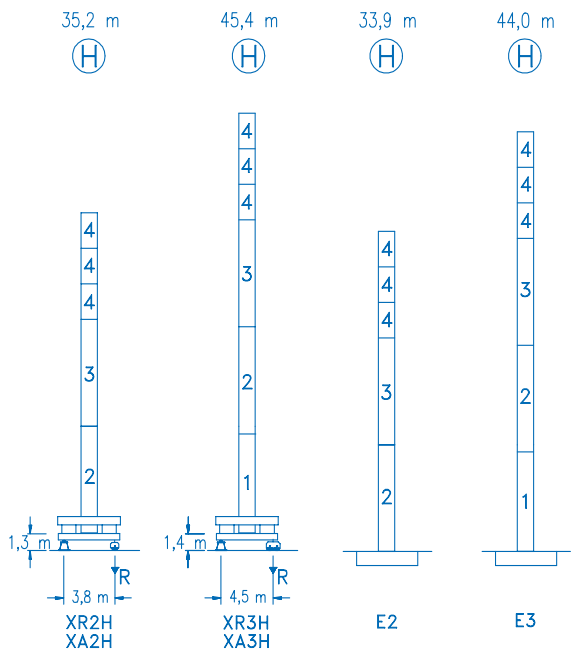
LC-5211

5 t



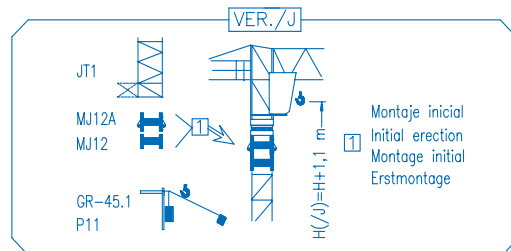
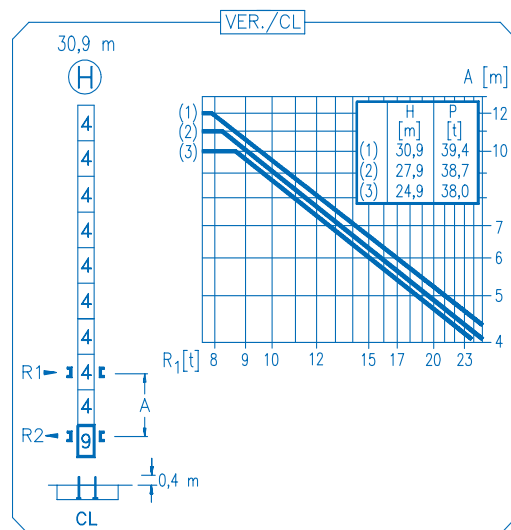
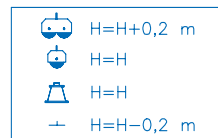
CE
DIN 15018 H1 B3

| R | R(Cmax) | Cmax | 20,0 | 25,0 | 30,0 | 35,0 | 37,5 | 40,0 | 42,5 | 45,0 | 47,5 | 50,0 | 52,5 | m |
|------|---------|------|------|------|------|------|------|------|------|------|------|------|------|----|
| 52,5 | 26,8 m | 2500 | 2500 | 2500 | 2190 | 1820 | 1680 | 1550 | 1440 | 1340 | 1250 | 1170 | 1100 | kg |
| | 14,2 m | 5000 | 3380 | 2600 | 2080 | 1720 | 1580 | 1450 | 1340 | 1240 | 1150 | 1070 | 1000 | |
| 50,0 | 30,8 m | 2500 | 2500 | 2500 | 2500 | 2150 | 1980 | 1840 | 1710 | 1590 | 1490 | 1400 | kg | |
| | 16,3 m | 5000 | 3960 | 3060 | 2470 | 2050 | 1880 | 1740 | 1610 | 1490 | 1390 | 1300 | | |
| 47,5 | 30,9 m | 2500 | 2500 | 2500 | 2500 | 2160 | 1990 | 1850 | 1720 | 1600 | 1500 | kg | | |
| | 16,3 m | 5000 | 3980 | 3080 | 2480 | 2060 | 1890 | 1750 | 1620 | 1500 | 1400 | | | |
| 45,0 | 32,4 m | 2500 | 2500 | 2500 | 2500 | 2290 | 2110 | 1960 | 1820 | 1700 | kg | | | |
| | 17,1 m | 5000 | 4200 | 3250 | 2630 | 2190 | 2010 | 1860 | 1720 | 1600 | | | | |
| 42,5 | 33,6 m | 2500 | 2500 | 2500 | 2380 | 2200 | 2040 | 1900 | kg | | | | | |
| | 17,8 m | 5000 | 4380 | 3390 | 2740 | 2280 | 2100 | 1940 | | 1800 | | | | |
| 40,0 | 34,4 m | 2500 | 2500 | 2500 | 2450 | 2260 | 2100 | kg | | | | | | |
| | 18,2 m | 5000 | 4500 | 3490 | 2820 | 2350 | 2160 | | 2000 | | | | | |
| 37,5 | 34,2 m | 2500 | 2500 | 2500 | 2440 | 2250 | kg | | | | | | | |
| | 18,1 m | 5000 | 4470 | 3470 | 2800 | 2340 | | 2150 | | | | | | |
| 35,0 | 35,0 m | 2500 | 2500 | 2500 | 2500 | kg | | | | | | | | |
| | 18,5 m | 5000 | 4580 | 3560 | 2880 | | 2400 | | | | | | | |
| 30,0 | 30,0 m | 2500 | 2500 | 2500 | kg | | | | | | | | | |
| | 18,6 m | 5000 | 4610 | 3580 | | 2900 | | | | | | | | |



| N | Ref. | h |
|---|---------|--------|
| 1 | MT123 | 10,1 m |
| 2 | MH124A | 11,8 m |
| 3 | MH124-1 | 11,8 m |
| 4 | MH121 | 3,0 m |
| 9 | CL20 | 2,2 m |

MH124=(4)MH121-0,2 m



| | | |
|----------------|---|-------------------|
| R. máx. | En servicio In operation En service In Betrieb | XR2H 46,0 t |
| | | XR3H 49,0 t |

| | | |
|----------------|---|-------------------|
| R. máx. | Fuera de servicio Out of service Hors service Ausser Betrieb | XR2H 50,9 t |
| | | XR3H 72,4 t |

CS2-1.9
1,9 kW
16 m/min
48 m/min

CFU-2.2
2,2 kW
0 ⇄ 80 m/min

GR-9.0
90 Nm
0 ⇄ 0,7 rpm

TS2-4.5 | **TS2-5.5**
2x45 Nm | 2x55 Nm
0 ⇄ 20 m/min
XR2H | XR3H

ES3-18-12
18 kW

| | I | II | III |
|-------|------|------|------|
| m/min | 8 | 32 | 64 |
| kg | 2500 | 2500 | 1300 |
| m/min | 4 | 16 | 32 |
| kg | 5000 | 5000 | 2600 |

EFU2-18-12
18 kW

| | |
|--|---|
| Tensión de alimentación Operating voltage Tension de service Betriebsspannung | 400 V 3 ph 50 Hz |
|--|---|

| | |
|---|----------|
| Opcional Optional En option Kaufoption | * |
|---|----------|